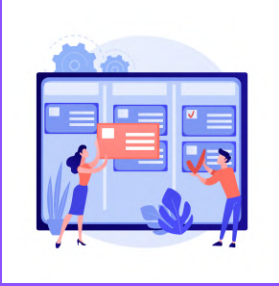


Method 11

Mentorship Youth Vocation



 <p>Complexity</p>	 <p>Target group</p>	 <p>Pax number</p>	 <p>Activity duration</p>
<p>Easy</p>	<p>Young people</p>	<p>20</p>	<p>30 min</p>

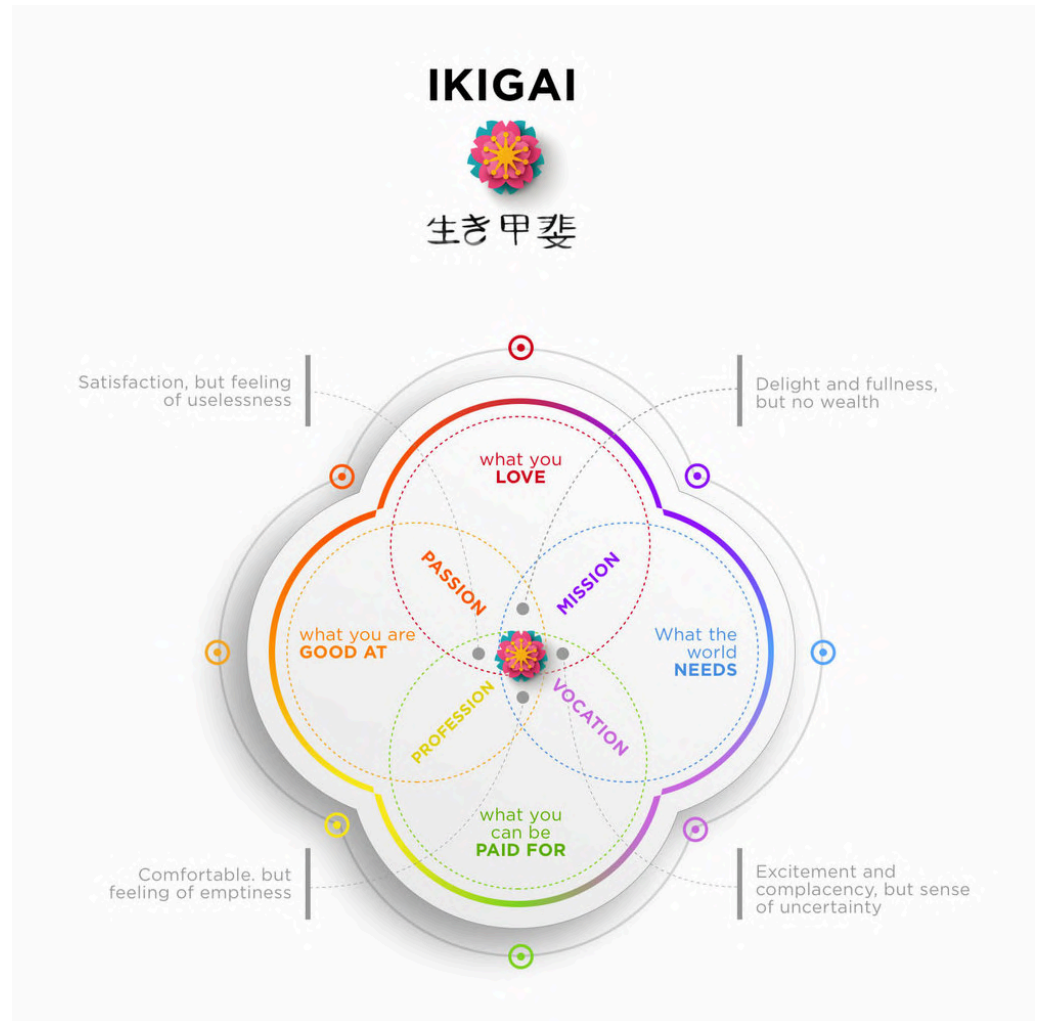


Description

To guide the youngsters about their potential/ vocation/ mission/ passion/ profession

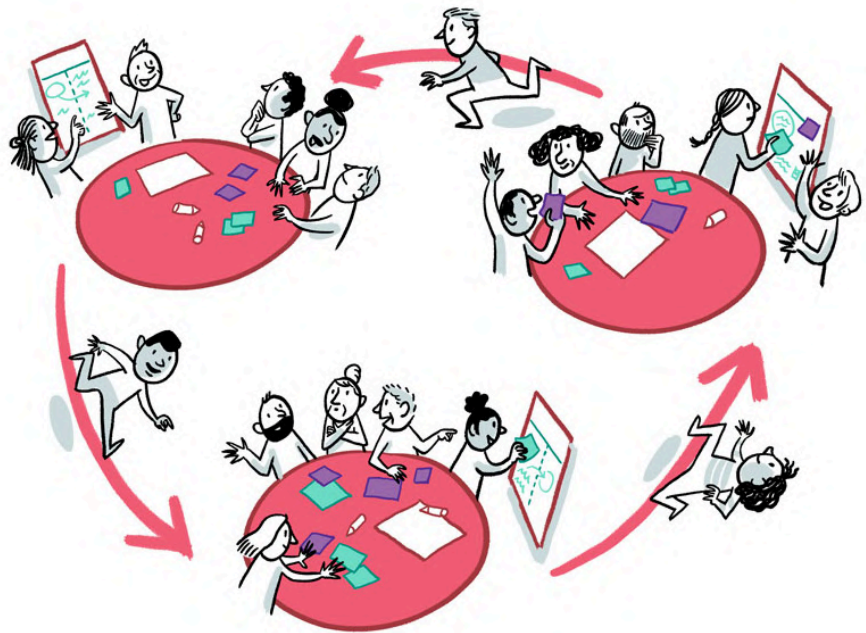
Ikigai method adapted to entrepreneurship topic and ideas

to develop personalized opinions on the participants and their needs. Then matching the questions with their needs and examples of businesses from the good practices from the Guideline.



Needed materials

- Using IKIGAI vocational method adapted to entrepreneurship topic and ideas
- List of Questions
- Guideline
- Good Practice
- World cafe concept



World Café Guidelines



Co-funded by the European Union

This project has been funded with support from the European Commission. This publication reflects the views only of the author, and the Commission cannot be held responsible for any use which may be made of the information contained therein